



# **River Connection Input Events Summary Report**

*“How do you want to experience the St. Louis River?”*

*“What barriers prevent you from doing so?”*

Prepared by the St. Louis River Alliance, July 2023

## Table of Contents

Overview .....	2
Individual River Connection Event Recaps .....	3
<i>Wednesday, January 25 @ Gary-New Duluth Recreation Center</i> .....	3
<i>Sunday, February 12, Winter Walk Along the Water</i> .....	4
<i>Tuesday, February 21 @ Morgan Park Community Center</i> .....	5
<i>Tuesday, March 21 @ Wussow's Concert Café</i> .....	5
<i>Tuesday, March 28 @ Harrison Community Center</i> .....	6
<i>Thursday, April 13 @ Black Bear Casino</i> .....	6
Online Feedback form Recap .....	7
Cumulative River Connection Feedback form Results .....	7
<i>Neighborhoods of Feedback form Participants</i> .....	7
<i>Ages of Feedback form Participants</i> .....	8
<i>What river-based activities are participants interested in?</i> .....	9
<i>What time would be best to hold these activities?</i> .....	9
<i>What are the ages that would have an interest in these activities?</i> .....	10
<i>What barriers prevent you or your family from participating in these activities now?</i> .....	11
<i>How do participants prefer to hear about these events?</i> .....	12
<i>What is the maximum fee participants would be willing to pay?</i> .....	13
<i>Additional Comments</i> .....	14
Conclusion & Recommendations .....	14
Appendix .....	17
<i>River Connection Feedback form (Google Form)</i> .....	17
<i>River Connection Feedback form (Physical Feedback form)</i> .....	18
<i>River Connection Kids Coloring Sheet</i> .....	19
<i>River Connection Neighborhood Map</i> .....	20
<i>River Connection Facebook Event Example</i> .....	21
<i>River Connection Constant Contact Promotion Example</i> .....	21
<i>River Connection Poster Example</i> .....	22
<i>River Connection Feedback form Results</i> .....	0

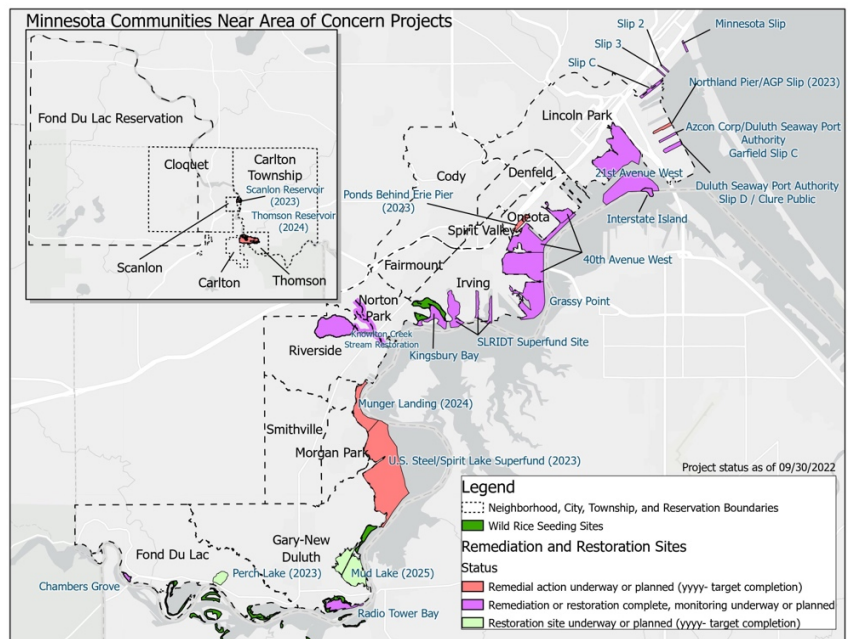
## Overview

This project was funded by Great Lakes Restoration Initiative funds (GLRI) as a supplemental activity to the St. Louis River Area of Concern (SLRAOC) work under Environmental Protection Agency's (EPA) Management Assistance Award program under Task 4.2. The task was created to plan for activities in neighborhoods that meet environmental justice criteria and that are located near Minnesota's remediation and restoration sites in the SLRAOC. Six in-person neighborhood input events were planned and facilitated with the goals of identifying neighborhood engagement priorities and the barriers they have experienced. Locations and venues for each of the six events were selected by finding a central location and appropriate venue in adjoining neighborhoods. Gift cards for a local grocery store were given to residents as incentives to provide feedback at the events, and food was served at the events. The budget for Task 4.2 was \$25,712.20.

Approximately 300 people attended six events whose participation resulted in awareness about the SLRAOC work, though some opted not to submit feedback. Of those 300 people who attended the events, 152 chose to submit feedback through a physical form that was available at the events. In addition, 28 people submitted online feedback via a Google Form created by the St. Louis River Alliance. From January until April 2023 the St. Louis River Alliance collected River Connection feedback forms from a total of 180 people. 86% of the 180 responses came from targeted SLRA neighborhoods.

The goal of the events was to learn about what activities community members hope to experience on the St. Louis River, as well as any barriers that may prevent them from getting out to do those activities.

The focus area of this project includes the following river-adjacent neighborhoods and communities: Carlton/Thomson, Cloquet/Scanlon, Cody, Denfeld, Fairmont, Fond du Lac Reservation, Fond du Lac Neighborhood, Gary-New Duluth, Irving, Lincoln Park, Morgan Park, Norton Park, Oneota, Riverside, Smithville, and Spirit Valley. There were also participants from other communities outside of the focus area.



The input received at the events and through online feedback will help determine future event opportunities offered by the St. Louis River Alliance, in partnership with the Minnesota Pollution Control Agency.

The in-person events were promoted via the St. Louis River Alliance website, social media channels [Facebook and Instagram], and Constant Contact email newsletter, in addition to being shared on online community calendars [WDIO, Perfect Duluth Day, The Reader Duluth], posters hung throughout the river neighborhoods, partner organization's networks, radio promotion, through the Nahgaajiwonong Dibaajimowinan Fond du Lac newspaper, and shared among various community Facebook pages.

Participation in the River Connection events was not only related to interest, it was also dependent on a person's ability to attend an event's selected dates, times and locations. These events were not part of a randomly sampled scientific study upon which statistically significant determinations could be made. They were intended to provide location-based, anecdotal information that could be used to guide the development of future stewardship events.

What follows is a summary of when, where, and how many people attended the in-person River Connection Events, in addition to the largest barriers these participants face and the activities they are most interested in experiencing on or near the St. Louis River.

## A. Individual River Connection Event Recaps

### 1. Wednesday, January 25 @ Gary-New Duluth Recreation Center

- 'Winter Fun Night', 4-6 p.m.
- In partnership with the Stowe Elementary School afterschool program.
- Attendees: 100-150
- Feedback forms submitted: 60
- Gift cards given out: 44
- St. Louis River Alliance staff and volunteers in attendance: 6
- Neighborhood Engagement Priorities:
  1. Canoeing/Paddle Sports [39 votes]
  2. Walks & Talks [38 votes]
  3. Fishing [33 votes]
- Biggest Barriers:
  1. "I don't have equipment" [23 votes]
  2. "I don't know where to go" [21 votes]
  3. "I'm too busy" [19 votes]
- Kid's Coloring Sheet 'Feedback form' Results
  1. Swimming [22 votes]
  2. Family Time [14 votes]
  3. Fishing [11 votes]





Note: for this event we knew many youth would attend since it was in conjunction with Stowe Elementary's afterschool program. Therefore, a special coloring sheet [Appendix 'River Connection Kids Coloring Sheet'] was provided that asked the kids "What activity looks the most fun to you?" They were then asked to circle their top choices. Options included: Paddling, Family Time, Snowshoeing and Winter Fun, Nature Walks, Fishing, and Swimming. (Above are the top three choices.)

- Additional Notes:
  - This event was held outside and there were many activities provided for the kids to enjoy, including hot chocolate, a bonfire, pictures with Pat the Piping Plover and more. There was an incredible turnout, and many people were interested in learning about the feedback form results when complete.
  - Barb Huberty with Minnesota Pollution Control Agency was at the event and available to answer SLRAOC questions.
  - Questions asked were:
    - When will these events be happening?
    - Will there be transportation available?
    - Why aren't you doing this in other neighborhoods in Duluth?

## 2. Sunday, February 12, Winter Walk Along the Water

- Waabizheshikana Trail, 12:30-1:30 p.m.
- In partnership with the annual Winter Out West events.
- Attendees: 25
- Feedback forms Submitted: 19
- Gift cards given out: 13
- St. Louis River Alliance staff and volunteers in attendance: 4
- Neighborhood Engagement Priorities:
  1. Walks & Talks [18 votes]
  2. Canoeing/Paddle Sports [14 votes]
  3. Birdwatching [12 votes]
- Biggest Barriers:
  1. "I don't know where to go" [9 votes]
  2. "I don't have anyone to go with" & "I don't have equipment" [4 votes each]
  3. "I don't know how to do the activity" & "I am too busy" [3 votes each]
- Additional Notes:
  - Barb Huberty with Minnesota Pollution Control Agency was at the event and available to answer SLRAOC questions.
  - Some challenges included pre- and post-event snowmobile trail use.
  - Questions asked were:
    - How long will wild rice keep being planted in Kingsbury Bay?
    - What kinds of volunteer opportunities do you have?



### 3. Tuesday, February 21 @ Morgan Park Community Center

- 5:30-6:30 p.m.
- Attendees: 16
- Feedback forms Submitted: 14
- Gift cards given out: 14
- St. Louis River Alliance staff and volunteers in attendance: 3
- Neighborhood Engagement Priorities:
  1. Walks & Talks [12 votes]
  2. Canoeing/Paddle Sports [10 votes]
  3. Fishing [7 votes each]
- Biggest Barriers:
  1. "I don't know where to go" [9 votes]
  2. "I don't feel safe" [6 votes]
  3. "I don't have equipment" [3 votes]
- Additional notes:
  - This group was very involved since many of them were from the Morgan Park neighborhood with such a visible connection to the construction projects. There were a few people who arrived at the very end of the event and were given SLRAOC information and asked to complete feedback forms.
  - LaRae Lehto with Minnesota Pollution Control Agency was at the event and available to answer SLRAOC questions.
  - Questions asked were:
    - How clean is the water, actually?
    - Will my kids ever be able to swim here?
    - Will the Waterfront Trail continue on? How far? When?
    - Where/how can we learn more about the projects happening along the St. Louis River?

### 4. Tuesday, March 21 @ Wussow's Concert Café

- 6-7 p.m.
- Attendees: 25-35
- Feedback forms Submitted: 19
- Gift cards given out: 16
- St. Louis River Alliance staff and volunteers in attendance: 3
- Neighborhood Engagement Priorities:
  1. Walks & Talks [18 votes]
  2. Canoeing/Paddle Sports [11 votes]
  3. Birdwatching [10 votes]
- Biggest Barriers:
  1. "I don't know where to go" [10 votes]
  2. "I don't have anyone to go with" [6 votes]
  3. "I'm too busy" [4 votes]

- Additional Notes:
  - Tracy Shaw shared a story about when she was growing up they were always told not to go into the St. Louis River/bay. However, they would still go in and she recalls coming out itchy and with irritated skin more than once!
  - Barb Huberty with Minnesota Pollution Control Agency was at the event and available to answer SLRAOC questions.
  - Questions asked:
    - Where can we access the water since Munger Landing is being worked on?
    - Are there any places where swimming is safe?

## 5. Tuesday, March 28 @ Harrison Community Center

- 5:30-6:30 p.m.
- Attendees: 19
- Feedback forms Submitted: 15
- Gift cards given out: 13
- St. Louis River Alliance staff and volunteers in attendance: 3
- Neighborhood Engagement Priorities:
  1. Walks & Talks [13 votes]
  2. Birdwatching [10 votes]
  3. Canoeing/Paddle Sports [9 votes]
- Biggest Barriers:
  1. "I don't know where to go" [12 votes]
  2. "I don't have equipment" [8 votes]
  3. "I don't have a way to get there" [4 votes]
- Additional Notes:
  - Barb Huberty with Minnesota Pollution Control Agency was at the event and available to answer SLRAOC questions.
  - There were multiple requests to hear about the result of the feedback form findings when complete. St. Louis River Alliance said they would share the results via email when everything was compiled.
  - Questions asked:
    - Many questions regarding future event planning for the grant; will transportation be provided? Will you provide equipment?
    - People were interested in getting more involved in the work and were happy to share ideas including other local groups that the St. Louis River Alliance could partner/network with.

## 6. Thursday, April 13 @ Black Bear Casino

- 5:00-7:00 p.m.
- This event was hosted in conjunction with the "Area of Concern: From a Fond du Lac Viewpoint" event due to the need to reschedule the March 16th event that was cancelled due to weather at Fond du Lac Tribal and Community College.

- Attendees: 64
- Feedback forms Submitted: 25
- Gift cards given out: 12
- Neighborhood Engagement Priorities:
  1. Canoeing/Paddle Sports [21 votes]
  2. Walks & Talks [18 votes]
  3. Birdwatching [14 votes]
- Biggest Barriers:
  1. "I don't know where to go" [14 votes]
  2. "I don't have equipment" [9 votes]
  3. "I'm too busy" [8 votes]

## B. Online Feedback form Recap

- 28 Respondents submitted an online River Connection feedback form that was shared on the St. Louis River Alliance's social media channels and via the St. Louis River Alliance's Constant Contact email list.
- Neighborhood Engagement Priorities:
  1. Walks & Talks [20 votes]
  2. Canoeing/Paddle Sports [19 votes]
  3. Service Projects [16 votes]
- Biggest Barriers:
  1. "I'm too busy" [9 votes]
  2. "I don't have anyone to go with" [9 votes]
  3. "I don't know how to do the activity" [7 votes]

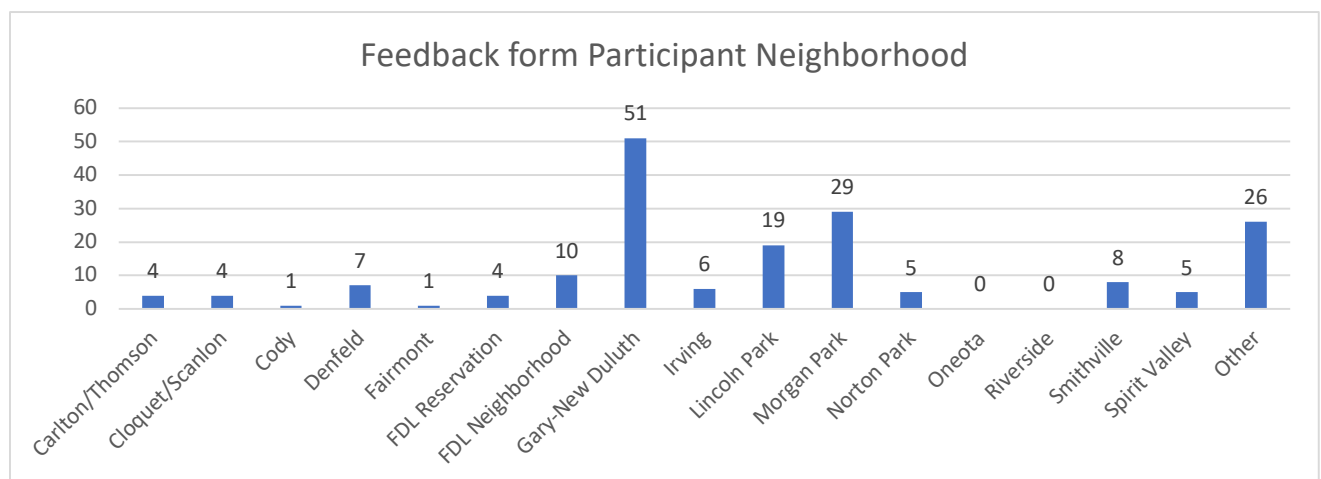
## C. Cumulative River Connection Feedback Form Results

### 1. Feedback Form Participants

Out of the 180 feedback forms submitted, the top Duluth neighborhoods and river-adjacent communities represented were Gary-New Duluth with 51 participants, Morgan Park with 29 participants, and Lincoln Park with 19 participants. There were an additional 26 participants from 'Other' neighborhoods and towns including but not limited to Central Hillside, Piedmont, Lakeside in Duluth, St. Paul, and Two Harbors. There were no feedback forms submitted from the neighborhoods of Oneota or Riverside.



One reason the Gary-New Duluth attendance was so high is due to the event being hosted at the Gary-New Duluth Recreation Center and the partnership the St. Louis River Alliance created with Stowe Elementary School's K.E.Y. Zone Program, facilitated by the Duluth YMCA who helped promote the event via the school's newsletter. In addition to helping promote the event through the school's newsletter, they also invited other organizations to the event and provided staffing and outdoor activity equipment. This partnership highlighted the need for future events to be in collaboration with other organizations, entities, and schools in order to reach new audiences.

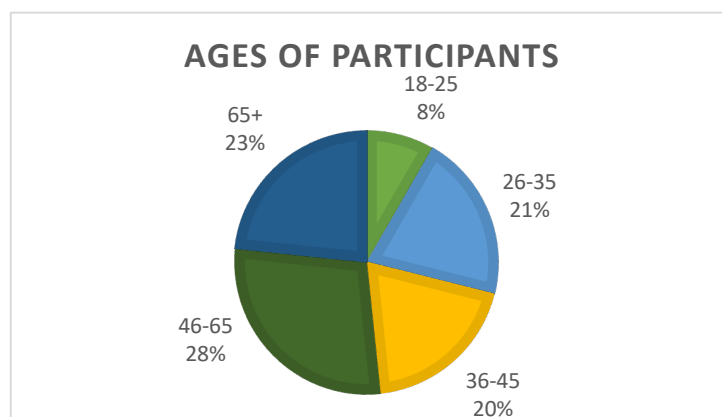


## 2. Ages of Feedback form Participants

Responses were submitted across all age groups. The age group that had most representation was ages 46-65, with 28% of participants in this range.

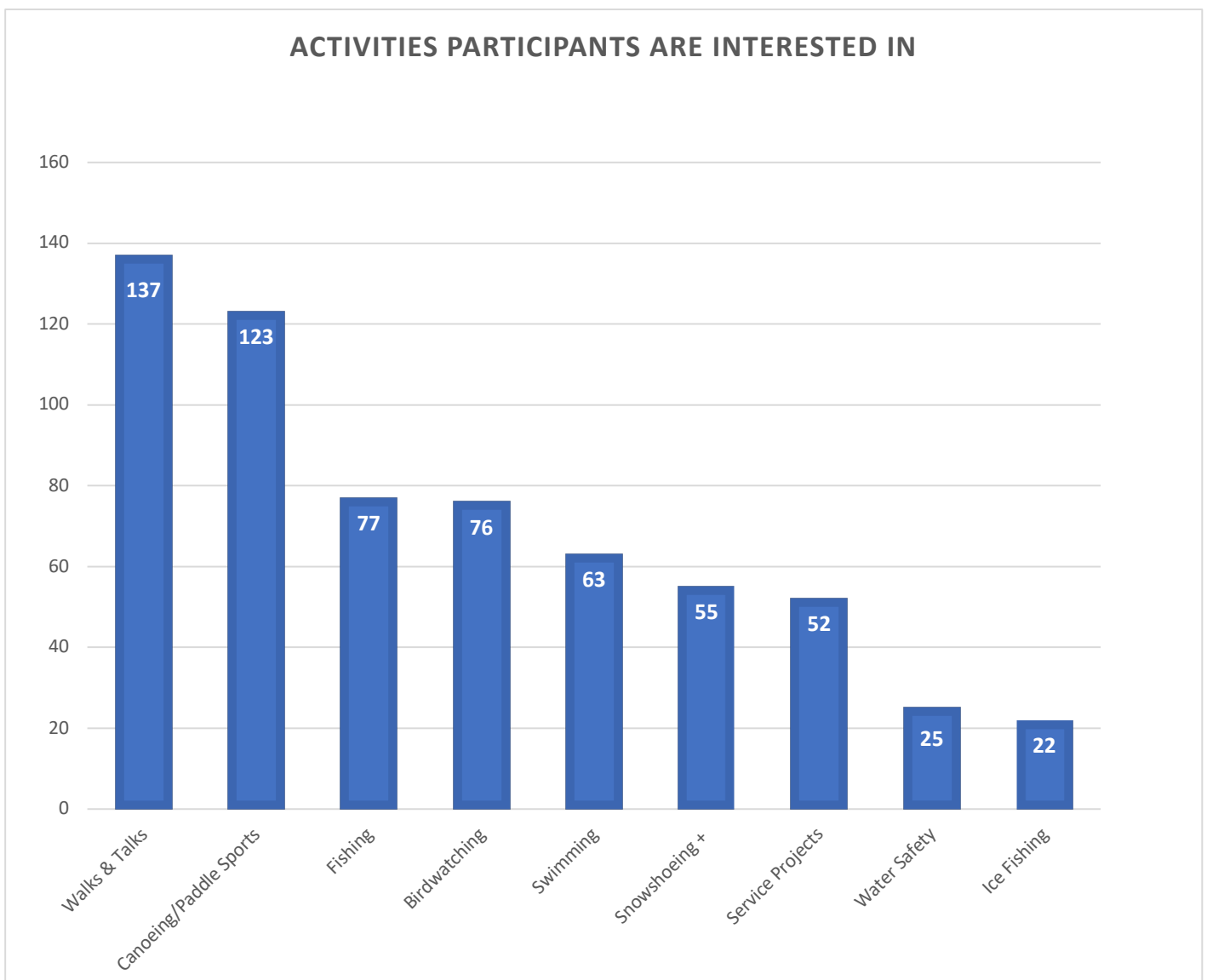
51% of all feedback form participants were 46 or older, which aligns with the average age of participants at most St. Louis River Alliance events.

Feedback was received from participants in all age categories, showing that no matter someone's stage in life, they are hoping to experience the St. Louis River in different ways.



### 3. What river-based activities are participants interested in?

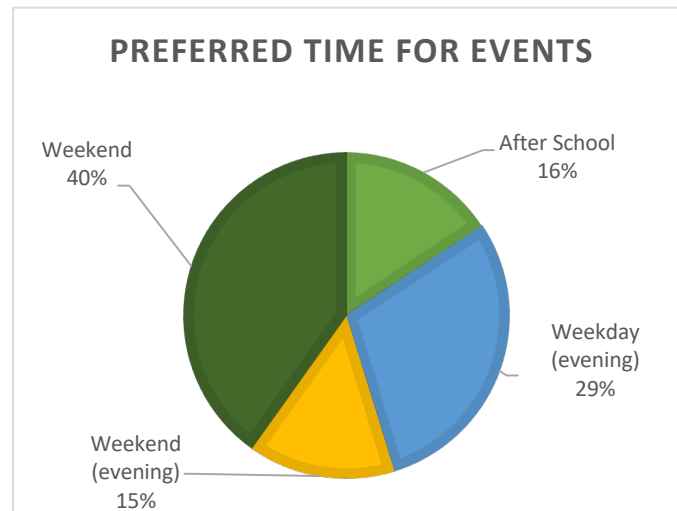
Feedback form participants were most interested in *Walks & Talks* near the river (137 votes) and *Canoeing, Kayaking, and Paddling* (123 votes). On the feedback form we had suggested a few subjects for Walks & Talks including history, plants, animals, and mushrooms. Next highest interest was *Fishing* (77 votes) and *Birdwatching* (76 votes).



### 4. What time would be best to hold these activities?

Most participants (40%) would prefer events to be hosted on the weekends during the day, time not specified. An additional 29% of participants would prefer to have the events in the evening on a weekday. Providing both options will allow participants the

most flexibility in being able to attend. This determination will also depend on what the type of event is and what age group we are hoping to attract to the event.

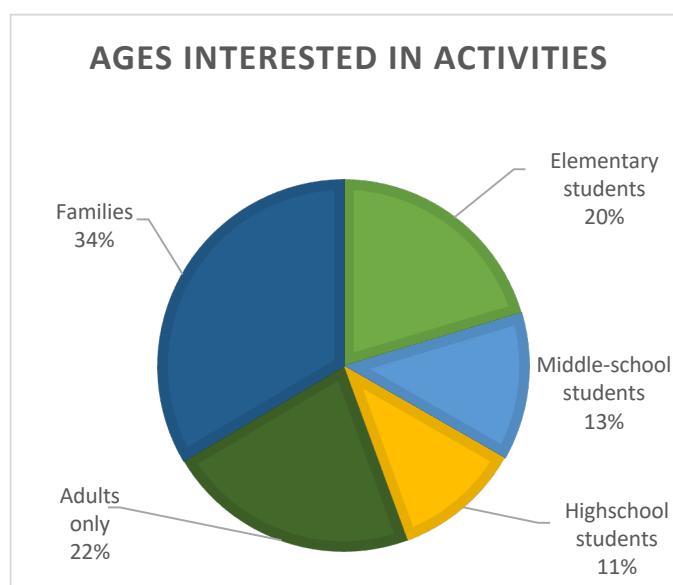


**5. What are the ages that would have an interest in these activities?**

The most common selection for “what ages would have interest in these activities” was *Families*, next would be *Adults Only*, and *Elementary Students* in a close third.

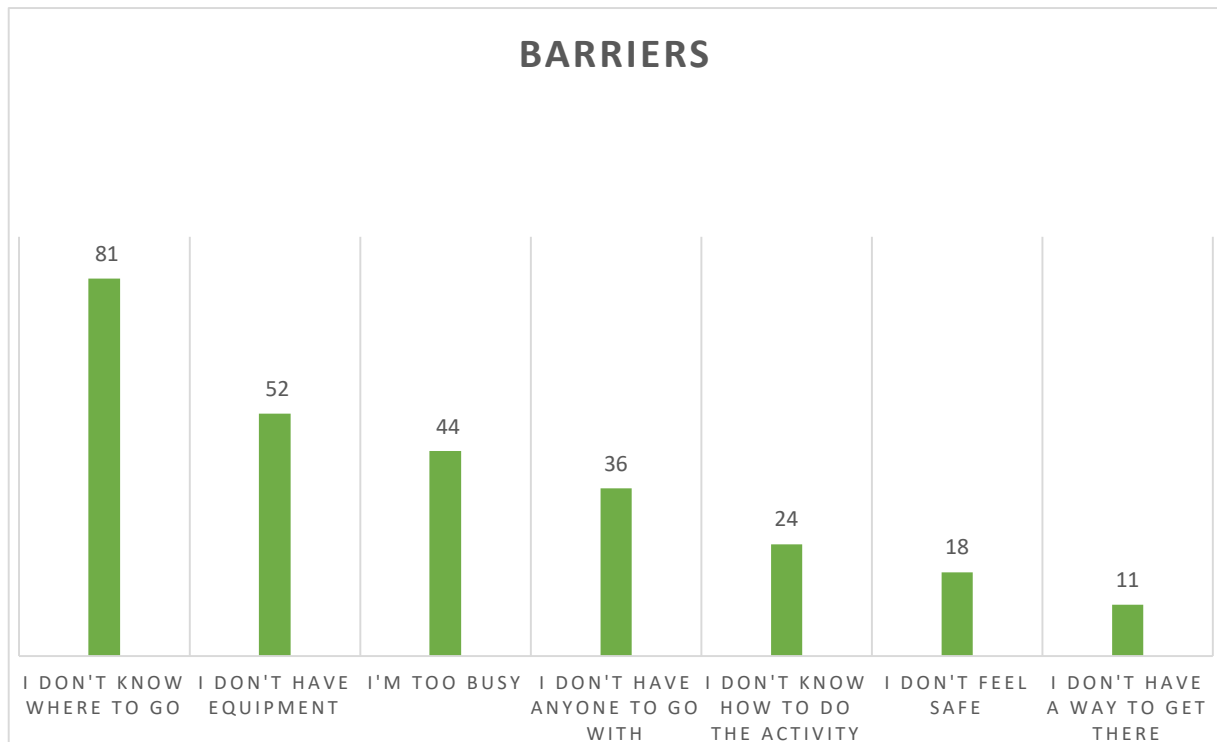
It is important to note that many feedback form participants selected multiple choices. This data shows that all ages have some sort of interest in the St. Louis River and that the events and activities selected by the St. Louis River Alliance should be accessible to a large age range and/or have the ability to be modified to meet different participant ages. Children’s input indicated that family time is important to them.

A few individual participants shared in the notes section that seniors would appreciate senior only activities during the daytime hours, with the suggestion of birding activities and walks and talks along the water.



6. What barriers prevent you or your family from participating in these activities now?

Listed from highest to lowest indicated barrier.



1. ***"I don't know where to go"***

81 out of 180 participants (45%) stated that a barrier they face to getting on/near the river is that they don't know where to go. For some, this may be due to lack of knowledge about access points. However, some people indicated during the event that they felt a sense of 'displacement' due to the pollution and/or clean-up work. In Morgan Park specifically, residents shared that there is limited water access due to the SLRAOC cleanup efforts, the railroad, and privatization of land ownership. These concerns were echoed at other neighborhood meetings. Participants at the Harrison Community Center, many from the Lincoln Park neighborhood, feel 'cut-off' since there is virtually no public access to the river in this neighborhood. In addition, one participant shared that there needs to be more education on winter access of the river for ice fishing and four-wheelers.

2. ***"I don't have equipment to do the activity"***

52 out of 180 participants (29%) stated they didn't have the appropriate equipment. This barrier may be related to transportation needs. Some community members have gear, but do not have the means of getting that gear to an event, whether it is because of physical limitations and/or not having transportation.

3. ***"I'm too busy"***

44 out of 180 participants (24%) shared that a barrier they have to getting on/near the water is that they are too busy.

4. ***"I don't have anyone to go with"***

36 of 180 participants (20%) shared that they do not have anyone to go with.

5. ***"I don't know how to do the activity"***

24 of 180 participants (13%) share that they do not have knowledge about how to do activities on the river.

6. ***"I don't feel safe near, on, or in the water"***

18 of 180 participants (10%) shared that they do not feel safe near or on the water. Though this barrier had a relatively low selection rate, many participants shared in-person or in the comment section of the feedback form that they do not feel safe for various reasons. Some of these reasons were that they were unsure how safe the water was due to the pollution, they did not know how strong the currents are or where easier/safer access points are for beginners, and that they would feel more comfortable with a non-motorized launch site (paddle-only craft) to help with safety in relation to non-motorized craft. At every *River Connection* event, at least one participant asked, 'Where is it safe to swim?'

7. ***"I don't have a way to get there"***

11 out of 180 participants (6%) shared that they do not have transportation to get to the water.

**Other Identified Barriers:**

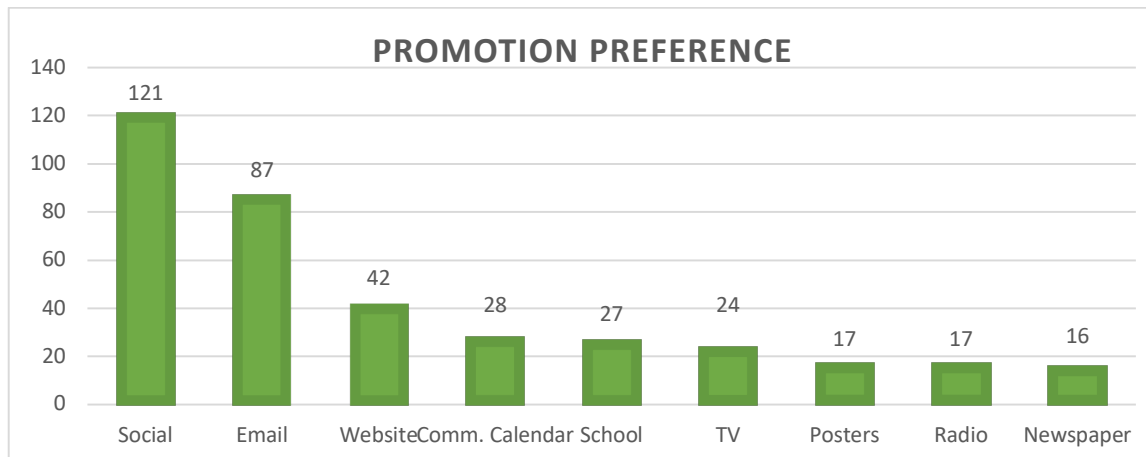
Multiple participants wrote in the comment section that they had a physical barrier and/or disability, which was not mentioned in the feedback form. A few of the Online Feedback forms respondents noted that wild rice was a barrier as it limited swimming, fishing, boating, and the view of the water.

7. **How do participants prefer to hear about these events?**

When asked ***'how do you prefer to hear about events?'***,

61% (121/180) of total respondents said that *Social Media* is where they find out about events, 48% (87/180) *Email Lists*, and 23% (42/180) *Website*. These are already the main methods currently used to promote St. Louis River Alliance events.



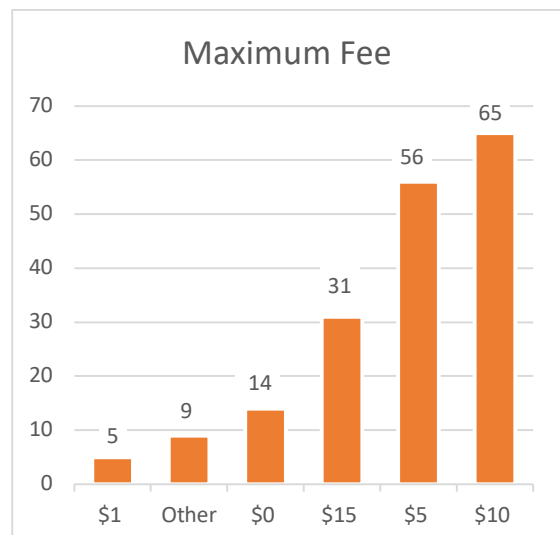


**DATA:**

For the six in-person River Connection events, the St. Louis River Alliance used Community Facebook & Neighborhood pages in addition to the Alliance's Facebook and Instagram pages to reach new audiences. Multiple participants said this is where they found out about the event. Some of the Community Facebook & Neighborhood pages used were Gary-New Duluth and Fond du Lac Community Group, Morgan Park Community Group, Official Morgan Park Community Club Group, Lincoln Park Duluth MN Group, Denfeld Community Group, Community Happenings & Kid/Family Events in Duluth MN, and Friends of the Parks, Duluth MN. One downside of using these avenues was that generally a staff/employee/volunteer needed to post from their personal Facebook page vs. the business Facebook page (i.e, St. Louis River Alliance), and not all staff were comfortable with this. However, this is an opportunity to recruit neighborhood leaders to help with marketing and outreach help.

**8. What is the maximum fee participants would be willing to pay?**

65 participants would be willing to pay \$10 or more to attend an event. 56 attendees would be able to afford \$5 or less to attend the events. 31 people would be willing to pay \$15 or less. 14 people would not be able to pay a fee at all. 5 participants stated that they could pay \$1. In the comments section, there were multiple suggestions to offer donation-based activities and/or family rates.



## Additional Comments

Below are additional notes, questions, or suggestions participants shared in the comment section of the feedback form:

- "I hope we maintain what we have and keep as much green natural space as possible. We have multiple River access points and plenty of room. Never a line aside from fishing opener."
- "We have enjoyed some of your events and activities and hope to do more!"
- "I am interested to know what habitat improvements have been made for fish."
- "River tours on pontoon or boat for people with limited mobility i.e. older people who can't paddle anymore as well as disabled and young children."
- "Can we walk by the River in Scanlon?"
- "Tribal input is important; cultural ceremonies run by Indigenous leaders."
- "If I have treaty rights, I shouldn't have to pay."
- "Unsure of the strength of the river, would want to go with someone experienced."
- "Please incorporate cultural tourism."
- "A motor free portage or boat ramp would help with safety in relation to non-motorized craft."

## D. Conclusion & Recommendations

The St. Louis River Alliance found the *River Connection* events and *River Connection* feedback form to be important and meaningful methods for connecting and learning from community members. In-person participation ranged from 16 to over 100 attendees at each event, with many events having smaller numbers. Regardless of how many individuals attended each event, the engagement and feedback was worth the resources and time. Community members shared their excitement to learn more about the river, their questions about the Area of Concern (AOC) process and projects, and their hopes for further opportunities to engage with the AOC work, recreate on the water, and steward the diverse ecosystems of the St. Louis River.

### ***Promoting to River Neighborhoods***

Though the *River Connection* feedback forms and events were geared towards those who live in one of the 18 neighborhoods adjacent to the St. Louis River (River Neighborhoods), 14% or 26 participants were from other neighborhoods as far reaching as the Twin Cities or north into Two Harbors. As the neighborhood engagement plan is developed, it will be important to keep this fact in mind; people from many locations are interested in the Area of Concern process and getting out on the St. Louis River as it becomes cleaner and safer to do so. However, the goal of this project is to attract community members from underserved neighborhoods along the St. Louis River. Therefore, promotions will need to be strategic and thoughtful in order to be clear about the goal of the events, and to try to minimize negative reactions from others who are not the focus of this project.

One way the Alliance will prioritize the River Neighborhoods is by contacting participants who attended in-person *River Connection* events who stated they were interested in

volunteering/helping with promotional efforts. Some suggestions were including flyers at the larger low-income apartment complexes, or in food distribution boxes. Two participants from the neighborhoods stated they would help coordinate these efforts. In addition, using targeted social media and posting to community Facebook pages was very beneficial for the original input events and will continue to be used for the planned engagement events. Partnering with Lincoln Park Children and Families Collaborative, Valley Youth Center, and the schools (during session) will help reach new community members. The Alliance will also continue to look for ways to involve more youth and young adults so that St. Louis River stewardship can be instilled at a younger age.

Though there were a large percentage of representation from Gary-New Duluth and Morgan Park, the St. Louis River Alliance recommends keeping events geared towards all River Neighborhoods. It is important to not focus heavily on any one neighborhood, or neighborhood cluster. To attract the most people from the River Neighborhoods, the Alliance will prioritize direct marketing and promotional efforts to the River Neighborhoods weeks in advance of promoting events to the general public. This would again be communicating with partners and neighborhood representatives ahead of time to give community members in the focus areas first chance at signing up for events. Environmental justice work requires flexibility and openness to learn, so efforts will need to be made to continue to develop and adapt the plan to best fit the community's needs within the scope of the project.

### ***Considering Disabilities and Accessibility***

Results from the *River Connection* feedback form and event conversations show that there is a wide range of interest in activities, age groups, abilities, and comfort levels, in addition to access to resources. With this information, all ages will be encouraged to join the events, unless there is a specific safety concern (i.e. providing an intermediate kayaking lesson). The St. Louis River Alliance also recognizes the need to include people with varying abilities and recommends partnering with advocacy groups such as Courage Kenny Institute and CHOICE, Unlimited. These partnerships will take time to develop, but by year two (2024) and three (2025) on-the-water, safe, and inclusive opportunities can hopefully be provided for people with varying physical and mental disabilities. In 2023, the Alliance will work on building these relationships and continue to research and learn ways to adapt promotional language and event structures to better serve all community members.

Per participant feedback, the St. Louis River Alliance would like to provide grant-funded events free, by donation or via a sliding-scale to accommodate budgets and resources. If a donation-based or sliding-scale pay structure was offered, there would be an opportunity for those with more resources/income to help balance out the fee structure for those who are unable to pay.

Which payment options are chosen will depend on the activity selected and if gear/equipment is necessary. Walks and Talks will be free and open to the public. At all events, SLRA will require signed waivers from participants.

The majority of events will be hosted during the day on the weekends and in the evenings during the week, as this is what 69% of participants stated would work best for their schedules.

Throughout the next four years, a diverse set of activities will be provided that meet the needs and interests for all ages and abilities. The focus is to get people on/near the water in a safe, welcoming, and encouraging atmosphere. These events and activities are also an opportunity to build community connections not only for the organization, but between participants. For the first year (2023), focusing on *Walks & Talks* near the river will help begin building those relationships and getting people familiar with various access points. Years two (2024) and beyond will offer more on-water components as networks and relationships grow. The Alliance has built many organizational and governmental partnerships in its long history, and also more recently throughout the first year of this project. Those partners will be included in discussions in planning future events and called upon to assist when appropriate. The engagement plan will consider what partnerships exist and which ones said they would like to help in the future while planning events. As more partnerships are built throughout the Alliance's many events, some related to this project, and some outside this project, they will be called into action when appropriate.

### ***Safety***

Though *Water Safety* had a relatively low feedback form result (25 votes), the St. Louis River Alliance will prioritize and incorporate safety at every event to help educate and empower community members to make sound decisions while on or near the water. Some safety subjects that will be incorporated in future events are the dangers of cold water, cautions for various sections of the river and water current speeds, weather and how it can affect a trip, how to properly wear a life jacket, what safety equipment should be present when on the water, and the importance of having a backup plan. In addition, a pontoon or boat escort will be provided for all on-water activities for safety purposes and possibly as an option for those with disabilities that would prevent them from getting on a different craft.

In summary, the feedback received during this input phase of the St. Louis River Neighborhoods Engagement project have been inspirational. Through the events and conversations, it was apparent that there is a real need to help connect people to the river and to continue to educate the community on the positive changes of the river due to the Area of Concern efforts. Promoting newly developed infrastructure such as access points and amenities, providing gear and equipment resources, and highlighting important safety considerations are all important needs that the Alliance hopes to meet during the next phase of this project.

***The Alliance looks forward to helping build a positive perception of the river, while providing impactful events and activities that allow community members to make their own relationships and memories on the St. Louis River.***

## Appendix

### River Connection Feedback form (Google Form)

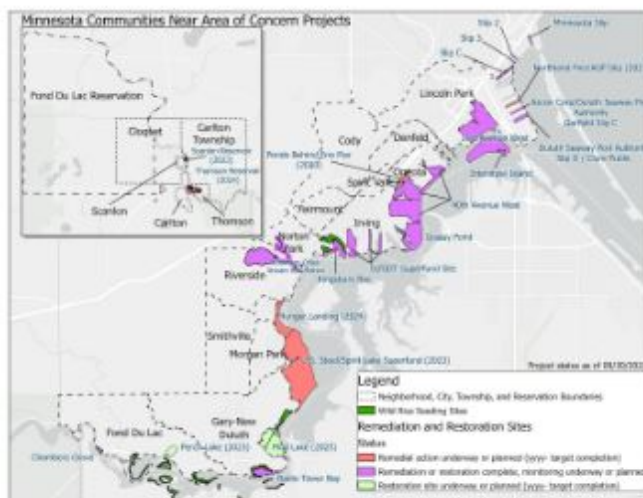


#### What river activities are you interested in?

The [St. Louis River Alliance](#), in partnership with the Minnesota Pollution Control Agency, is working to help connect river neighborhoods to the St. Louis River. We want to know what activities you are interested in and how we can build access to these activities!

Please take 5-10 minutes to fill out this form. Your answers will help us plan our summer event calendar for 2023 and beyond.


What neighborhood do you live in? (select one) \*



- ☐ Carlton/Thomson
- ☐ Cloquet/Scanlon
- ☐ Cody
- ☐ Danfeld
- ☐ Fairmont
- ☐ Fond du Lac Reservation
- ☐ Fond du Lac neighborhood
- ☐ Gary New Duluth



## River Connection Feedback form (Physical Feedback form)



### What river activities are you interested in?

The St. Louis River Alliance, in partnership with the Minnesota Pollution Control Agency, is working to help connect river neighborhoods to the St. Louis River. We want to know what activities you are interested in and how we can help build access to these activities!

Please take 5-10 minutes to fill out this form. Your answers will help us plan our summer event calendar for 2023 and beyond.

**What neighborhood do you live in? (select one)**

- ☐ Carlton/Thomson
- ☐ Cloquet/Scanlon
- ☐ Cody
- ☐ Denfeld
- ☐ Fairmont
- ☐ Fond du Lac Reservation
- ☐ Fond du Lac neighborhood
- ☐ Gary-New Duluth
- ☐ Irving
- ☐ Lincoln Park
- ☐ Morgan Park
- ☐ Norton Park
- ☐ Oneota
- ☐ Riverside
- ☐ Smithville
- ☐ Spirit Valley
- ☐ Other \_\_\_\_\_

**What is your age? (select one)**

- ☐ Under 18
- ☐ 18-25
- ☐ 26-35
- ☐ 36-55
- ☐ 56-65
- ☐ 65+

**What river-based activity are you interested in? (select top 3)**

- ☐ Bird watching
- ☐ Canoeing/kayaking/paddling
- ☐ Fishing
- ☐ Walks/talks near the river: History, plants, animals, mushrooms
- ☐ Service projects: Invasive species removal, clean-ups, native planting
- ☐ Swimming
- ☐ Water safety classes
- ☐ Ice fishing/ice safety
- ☐ Snowshoeing/skiing near river

**What time would be the best to hold these activities? (select one)**

- ☐ After school
- ☐ Evenings - week day
- ☐ Evenings - weekend
- ☐ Weekends
- ☐ Other \_\_\_\_\_

**What are the ages that would have an interest in these activities?**

- ☐ Elementary students
- ☐ Middle-school students
- ☐ Highschool students
- ☐ Adults only
- ☐ Families

**What barriers prevent you or your family from participating in these activities now? (select all that apply)**

- ☐ I don't know where to go
- ☐ I don't have a way to get there
- ☐ I don't feel safe near, on, or in the water
- ☐ I don't know how to do the activity
- ☐ I don't have equipment to do the activity
- ☐ I'm too busy
- ☐ I don't have anyone to go with

**How do you prefer to hear about these events? (select top two)**

- ☐ Social media
- ☐ Online community calendar
- ☐ Posters
- ☐ Newspaper
- ☐ Radio
- ☐ School announcements
- ☐ TV
- ☐ Website
- ☐ Email
- ☐ Other \_\_\_\_\_

**If a fee was required to help pay for equipment for the event, what is the maximum you would be willing to pay? (select one)**

- ☐ \$0 per person
- ☐ \$1 per person
- ☐ \$5 per person
- ☐ \$10 per person
- ☐ \$15 per person
- ☐ Other \_\_\_\_\_

**If you have additional suggestions, questions, comments or concerns, please share them here:**

\_\_\_\_\_

**If you would like to be contacted for future events, please share your name and email below. \*Your contact information will be used solely for SLRA updates and will not be shared with anyone else.**

Name: \_\_\_\_\_

Email: \_\_\_\_\_

St. Louis River Alliance • [www.stlouisriver.org](http://www.stlouisriver.org) • [outreach@stlouisriver.org](mailto:outreach@stlouisriver.org)

### Family Time



**Paddling**

### Snowshoeing & Winter Fun

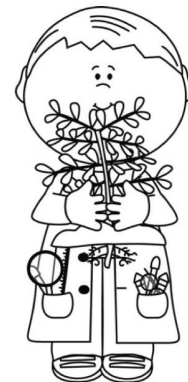


**What activities  
look fun to YOU?  
Color your 2 favorites!**

### Swimming

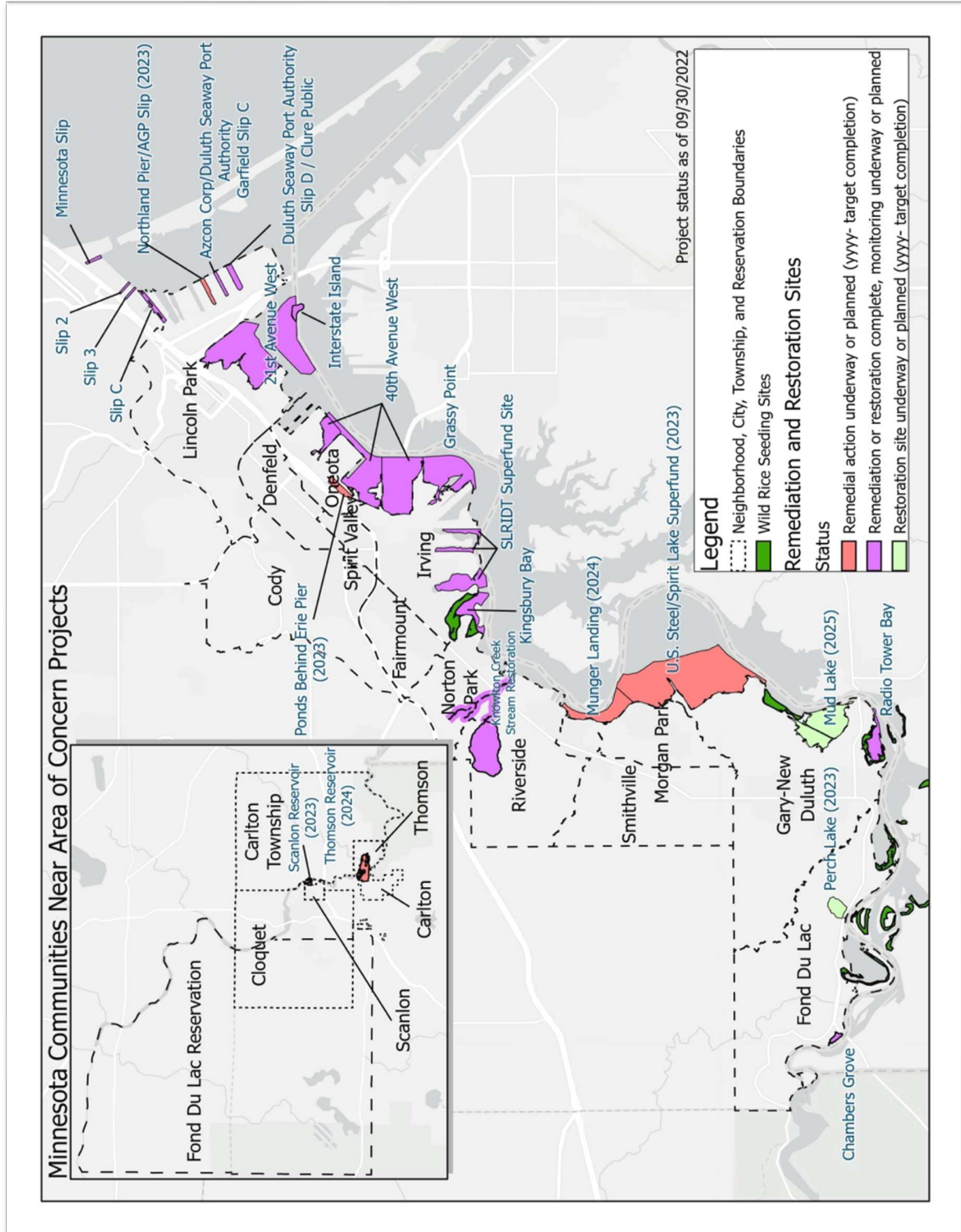


**Fishing**




**Nature Walks**

## River Connection Neighborhood Map



## River Connection Facebook Event Example



### RIVER CONNECTION EVENT

TUESDAY, FEBRUARY 21 FROM 5:30-6:30 P.M.  
@ MORGAN PARK COMMUNITY CENTER

21

TUESDAY, FEBRUARY 21, 2023 AT 5:30 PM – 6:30 PM

#### River Connection @ Morgan Park Community Center

1242 88th Ave. W, Duluth, MN 55808

AboutDiscussionEdit...

**Details**

7 people responded

Event by St. Louis River Alliance

1242 88th Ave. W, Duluth, MN 55808

Duration: 1 hr

Public · Anyone on or off Facebook

**Guests**

3Went4INTERESTED

[See All](#)

**Share to Groups**

Official Morgan Park Community Club

Private group · 850 members

[Share](#)


[See all](#)

## River Connection Constant Contact Promotion Example

## River Voice

### St. Louis River Alliance News & Updates

February 2023




#### RIVER CONNECTION EVENTS & SURVEY

**River Connection Events**  
The St. Louis River Alliance is interested in learning more about how the community wants to experience the St. Louis River and any barriers that prevent people from getting out on the water.

Join us at one of our River Connection events. Your feedback will help us determine what activities we should host along the river in the next four years!

[Winter Walk on the Waabizheshikana](#)  
**Sunday, February 12th**  
12:30-1:30 p.m.  
[Event details here](#)




On January 25, 2023 the St. Louis River Alliance partnered with the YMCA to host a *Winter Fun Night* at the Gary-New Duluth Rec. center. Learn more and see the pictures [HERE](#).

Thank you to everyone who came out to enjoy the snow, ice, sledding, and fun with...



## River Connection Poster Example



**TUES.  
MARCH 28**  
5:30-6:30 PM

# **RIVER CONNECTION EVENT**

@ HARRISON COMMUNITY CENTER  
3002 W 3RD ST. DULUTH



The St. Louis River Alliance is interested in learning about how YOU want to experience the St. Louis River!

**This event is free, family-friendly, and open to the public. Food and drinks provided. \$20 Super One gift cards will be awarded to the first 50 participants who attend, fill out our River Connection Survey, and live in one of the 18 neighborhoods along the St. Louis River.**

\*\*\*Though this event is open to all, you must be 18+, live in one of the focus neighborhoods (Lincoln Park, Denfeld, Cody, Oneota, etc.) and complete a physical survey in order to qualify for the gift cards.  
Limit of one gift card per family/address.\*\*\*

For more information, go to: [stlouisriver.org/events](http://stlouisriver.org/events)

**FREE FOOD & DRINKS  
+ \$20 SUPER ONE GIFT CARDS**





### Peer Connection Feedback form Results :

[illegible]

[illegible]



Best Time										Ages Interested					Barriers					Promo Pref.					Fee	Notes					
fish	Snow	After scd	Week day	Weekend	Weekend	Weekends	Elem	Middle	High	Ad.	Familie	IDK	w/ Trans	Don't fe	Don't kr	No equip	Too bu	No one	Social	Comm.	Posters	Newsps	Radio	Schoo	TV	Webait	Email	Other			
<input checked="" type="checkbox"/>	<input type="checkbox"/>	<input type="checkbox"/>	<input checked="" type="checkbox"/>	<input type="checkbox"/>	<input type="checkbox"/>	<input checked="" type="checkbox"/>	<input type="checkbox"/>	<input type="checkbox"/>	<input type="checkbox"/>	<input checked="" type="checkbox"/>	<input checked="" type="checkbox"/>	<input checked="" type="checkbox"/>	<input type="checkbox"/>	<input type="checkbox"/>	<input type="checkbox"/>	<input type="checkbox"/>	<input type="checkbox"/>	<input type="checkbox"/>	<input checked="" type="checkbox"/>	<input checked="" type="checkbox"/>	<input type="checkbox"/>	<input type="checkbox"/>	<input type="checkbox"/>	<input type="checkbox"/>	<input type="checkbox"/>	<input checked="" type="checkbox"/>	<input type="checkbox"/>	<input type="checkbox"/>	\$10		
<input checked="" type="checkbox"/>	<input type="checkbox"/>	<input type="checkbox"/>	<input checked="" type="checkbox"/>	<input type="checkbox"/>	<input type="checkbox"/>	<input type="checkbox"/>	<input type="checkbox"/>	<input type="checkbox"/>	<input type="checkbox"/>	<input checked="" type="checkbox"/>	<input checked="" type="checkbox"/>	<input checked="" type="checkbox"/>	<input type="checkbox"/>	<input type="checkbox"/>	<input type="checkbox"/>	<input type="checkbox"/>	<input type="checkbox"/>	<input type="checkbox"/>	<input checked="" type="checkbox"/>	<input checked="" type="checkbox"/>	<input type="checkbox"/>	<input type="checkbox"/>	<input type="checkbox"/>	<input type="checkbox"/>	<input type="checkbox"/>	<input type="checkbox"/>	<input type="checkbox"/>	<input type="checkbox"/>	<input type="checkbox"/>	\$10	
<input type="checkbox"/>	<input type="checkbox"/>	<input type="checkbox"/>	<input type="checkbox"/>	<input type="checkbox"/>	<input type="checkbox"/>	<input type="checkbox"/>	<input type="checkbox"/>	<input type="checkbox"/>	<input type="checkbox"/>	<input checked="" type="checkbox"/>	<input checked="" type="checkbox"/>	<input checked="" type="checkbox"/>	<input type="checkbox"/>	<input type="checkbox"/>	<input type="checkbox"/>	<input type="checkbox"/>	<input type="checkbox"/>	<input type="checkbox"/>	<input checked="" type="checkbox"/>	<input checked="" type="checkbox"/>	<input type="checkbox"/>	<input type="checkbox"/>	<input type="checkbox"/>	<input type="checkbox"/>	<input type="checkbox"/>	<input type="checkbox"/>	<input type="checkbox"/>	<input type="checkbox"/>	<input type="checkbox"/>	\$5	
<input type="checkbox"/>	<input type="checkbox"/>	<input type="checkbox"/>	<input type="checkbox"/>	<input type="checkbox"/>	<input type="checkbox"/>	<input type="checkbox"/>	<input type="checkbox"/>	<input type="checkbox"/>	<input type="checkbox"/>	<input checked="" type="checkbox"/>	<input checked="" type="checkbox"/>	<input checked="" type="checkbox"/>	<input type="checkbox"/>	<input type="checkbox"/>	<input type="checkbox"/>	<input type="checkbox"/>	<input type="checkbox"/>	<input type="checkbox"/>	<input checked="" type="checkbox"/>	<input checked="" type="checkbox"/>	<input type="checkbox"/>	<input type="checkbox"/>	<input type="checkbox"/>	<input type="checkbox"/>	<input type="checkbox"/>	<input type="checkbox"/>	<input type="checkbox"/>	<input type="checkbox"/>	<input type="checkbox"/>	\$0	Would love water access points in MOrgan Park; does not feel safe on water due to pollution, does not know where to go or how to get there due to limited water access; would prefer suggested donation instead of pay scale.
<input type="checkbox"/>	<input type="checkbox"/>	<input type="checkbox"/>	<input type="checkbox"/>	<input type="checkbox"/>	<input type="checkbox"/>	<input type="checkbox"/>	<input type="checkbox"/>	<input checked="" type="checkbox"/>	<input type="checkbox"/>	<input type="checkbox"/>	<input type="checkbox"/>	<input type="checkbox"/>	<input type="checkbox"/>	<input type="checkbox"/>	<input type="checkbox"/>	<input type="checkbox"/>	<input type="checkbox"/>	<input type="checkbox"/>	<input checked="" type="checkbox"/>	<input type="checkbox"/>	<input type="checkbox"/>	<input type="checkbox"/>	<input type="checkbox"/>	<input type="checkbox"/>	<input type="checkbox"/>	<input type="checkbox"/>	<input type="checkbox"/>	<input type="checkbox"/>	<input type="checkbox"/>	\$10	Need more housing on river - good trails for walking and picnicing.
<input type="checkbox"/>	<input type="checkbox"/>	<input type="checkbox"/>	<input type="checkbox"/>	<input type="checkbox"/>	<input type="checkbox"/>	<input type="checkbox"/>	<input type="checkbox"/>	<input type="checkbox"/>	<input type="checkbox"/>	<input checked="" type="checkbox"/>	<input checked="" type="checkbox"/>	<input checked="" type="checkbox"/>	<input type="checkbox"/>	<input type="checkbox"/>	<input type="checkbox"/>	<input type="checkbox"/>	<input type="checkbox"/>	<input type="checkbox"/>	<input type="checkbox"/>	<input type="checkbox"/>	<input type="checkbox"/>	<input checked="" type="checkbox"/>	<input type="checkbox"/>	<input type="checkbox"/>	<input type="checkbox"/>	<input type="checkbox"/>	<input type="checkbox"/>	<input type="checkbox"/>	<input type="checkbox"/>	\$10	
<input type="checkbox"/>	<input type="checkbox"/>	<input type="checkbox"/>	<input checked="" type="checkbox"/>	<input type="checkbox"/>	<input type="checkbox"/>	<input type="checkbox"/>	<input type="checkbox"/>	<input type="checkbox"/>	<input type="checkbox"/>	<input checked="" type="checkbox"/>	<input checked="" type="checkbox"/>	<input checked="" type="checkbox"/>	<input type="checkbox"/>	<input type="checkbox"/>	<input type="checkbox"/>	<input type="checkbox"/>	<input type="checkbox"/>	<input type="checkbox"/>	<input type="checkbox"/>	<input type="checkbox"/>	<input type="checkbox"/>	<input type="checkbox"/>	<input type="checkbox"/>	<input type="checkbox"/>	<input type="checkbox"/>	<input type="checkbox"/>	<input type="checkbox"/>	<input type="checkbox"/>	<input type="checkbox"/>	\$10	
<input type="checkbox"/>	<input type="checkbox"/>	<input type="checkbox"/>	<input type="checkbox"/>	<input type="checkbox"/>	<input type="checkbox"/>	<input type="checkbox"/>	<input type="checkbox"/>	<input type="checkbox"/>	<input type="checkbox"/>	<input type="checkbox"/>	<input type="checkbox"/>	<input type="checkbox"/>	<input type="checkbox"/>	<input type="checkbox"/>	<input type="checkbox"/>	<input type="checkbox"/>	<input type="checkbox"/>	<input type="checkbox"/>	<input type="checkbox"/>	<input type="checkbox"/>	<input type="checkbox"/>	<input type="checkbox"/>	<input type="checkbox"/>	<input type="checkbox"/>	<input type="checkbox"/>	<input type="checkbox"/>	<input type="checkbox"/>	<input type="checkbox"/>	<input type="checkbox"/>	\$15	
<input type="checkbox"/>	<input type="checkbox"/>	<input type="checkbox"/>	<input type="checkbox"/>	<input type="checkbox"/>	<input type="checkbox"/>	<input type="checkbox"/>	<input type="checkbox"/>	<input type="checkbox"/>	<input type="checkbox"/>	<input type="checkbox"/>	<input type="checkbox"/>	<input type="checkbox"/>	<input type="checkbox"/>	<input type="checkbox"/>	<input type="checkbox"/>	<input type="checkbox"/>	<input type="checkbox"/>	<input type="checkbox"/>	<input type="checkbox"/>	<input type="checkbox"/>	<input type="checkbox"/>	<input type="checkbox"/>	<input type="checkbox"/>	<input type="checkbox"/>	<input type="checkbox"/>	<input type="checkbox"/>	<input type="checkbox"/>	<input type="checkbox"/>	<input type="checkbox"/>	\$10	
<input type="checkbox"/>	<input checked="" type="checkbox"/>	<input type="checkbox"/>	<input type="checkbox"/>	<input type="checkbox"/>	<input type="checkbox"/>	<input type="checkbox"/>	<input type="checkbox"/>	<input type="checkbox"/>	<input type="checkbox"/>	<input type="checkbox"/>	<input type="checkbox"/>	<input type="checkbox"/>	<input type="checkbox"/>	<input type="checkbox"/>	<input type="checkbox"/>	<input type="checkbox"/>	<input type="checkbox"/>	<input type="checkbox"/>	<input checked="" type="checkbox"/>	<input type="checkbox"/>	<input type="checkbox"/>	<input type="checkbox"/>	<input type="checkbox"/>	<input type="checkbox"/>	<input type="checkbox"/>	<input type="checkbox"/>	<input type="checkbox"/>	<input type="checkbox"/>	<input type="checkbox"/>		A motor free porage or boat ramp would help with safety in relation to non-motorized craft.
<input type="checkbox"/>	<input type="checkbox"/>	<input checked="" type="checkbox"/>	<input type="checkbox"/>	<input type="checkbox"/>	<input type="checkbox"/>	<input type="checkbox"/>	<input type="checkbox"/>	<input type="checkbox"/>	<input type="checkbox"/>	<input type="checkbox"/>	<input checked="" type="checkbox"/>	<input checked="" type="checkbox"/>	<input type="checkbox"/>	<input type="checkbox"/>	<input type="checkbox"/>	<input type="checkbox"/>	<input type="checkbox"/>	<input type="checkbox"/>	<input checked="" type="checkbox"/>	<input type="checkbox"/>	<input type="checkbox"/>	<input type="checkbox"/>	<input type="checkbox"/>	<input checked="" type="checkbox"/>	<input type="checkbox"/>	<input type="checkbox"/>	<input type="checkbox"/>	<input type="checkbox"/>	<input type="checkbox"/>	\$5	
<input type="checkbox"/>	<input checked="" type="checkbox"/>	<input type="checkbox"/>	<input type="checkbox"/>	<input type="checkbox"/>	<input type="checkbox"/>	<input type="checkbox"/>	<input type="checkbox"/>	<input type="checkbox"/>	<input type="checkbox"/>	<input type="checkbox"/>																					







Fee:	1
\$0	50
\$1	0
5	5
10	0
\$15	7
Other	3







